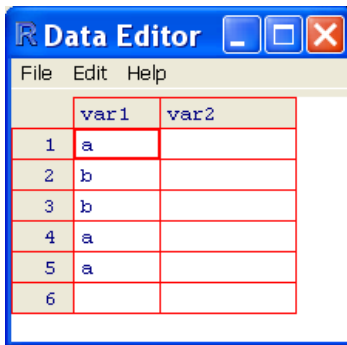


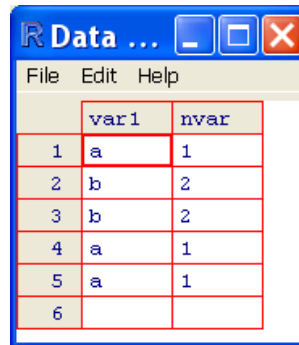
Convert a Character Variable to a Numeric Variable

The following instruction converts the character variable **var1** to a numeric variable by creating a new numeric variable, **nvar**. The original variable, **var1**, has values “a” and “b”, and we want to convert “a” to 1 and “b” to 2.



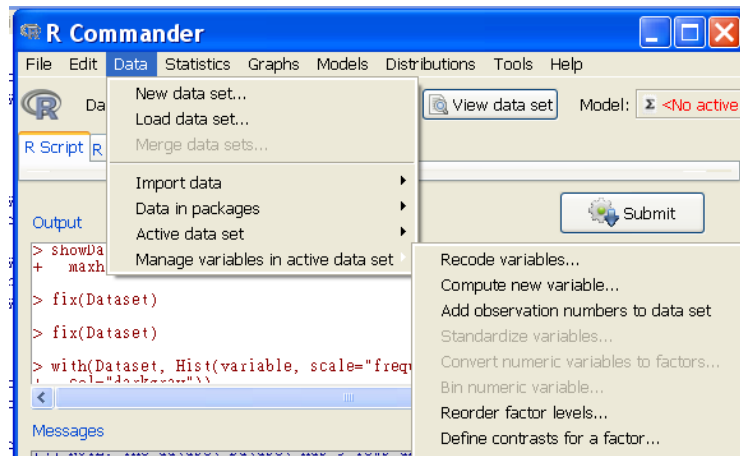
	var1	var2
1	a	
2	b	
3	b	
4	a	
5	a	
6		

⇒



	var1	nvar
1	a	1
2	b	2
3	b	2
4	a	1
5	a	1
6		

Step 1: Click **Data** on Menu bar, select **Manage variables in active data set** and choose **Recode variables ...**



Step 2: In **Recode Variable** dialog box, select the variable to be recoded, that is **var1**, and enter the code shown in the **Enter recode directives** box: **nvar** is the name for new variable, and “a”=1 is to use value 1 for a character string a. You always use double quotes “” to specify a character string. So, assigning value 2 for b would be “b” = 2. Having **Make new variable a factor** box unchecked will make the new variable a numeric variable. And, click **OK**.

