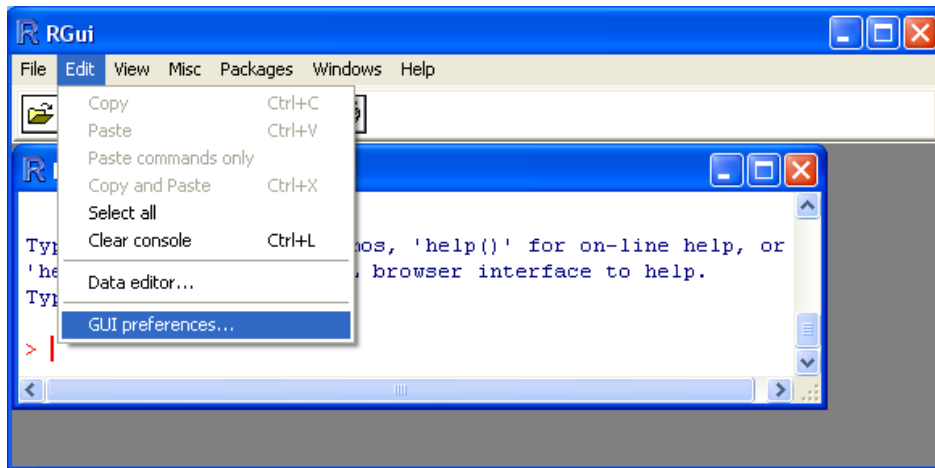
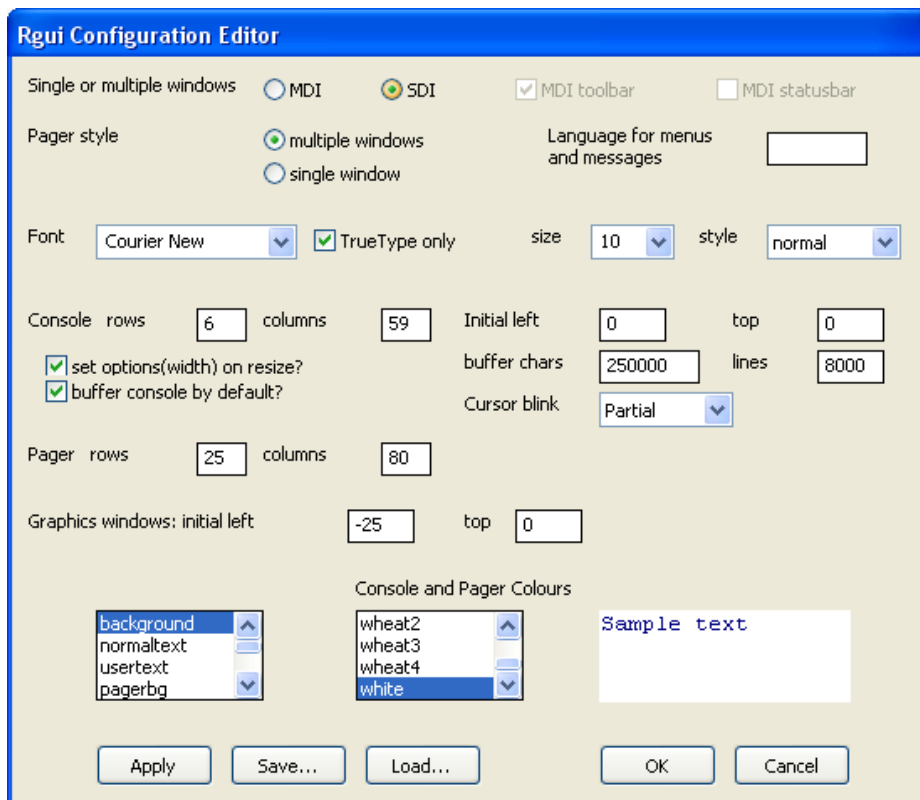


Change RGui from MDI to SDI Settings

Step 1: In RGui click Edit on menu bar, and select **GUI preferences ...**



Step 2: In RGUI Configuration Editor, check SDI bullet, and click **Save...** button, and save it in the default folder, that is whatever folder that is showing in the window. After R Console file is saved click **Cancel** button to leave the Configuration Editor window. **Do NOT click OK!!!**



Step 3: Close the RGui and reopen R. You should have the R window labeled as **R Console** window. To see if the setting is changed with SDI bullet checked, click **Edit** and select **RGui preferences** again. If SDI bullet is checked then the change of setting is done.