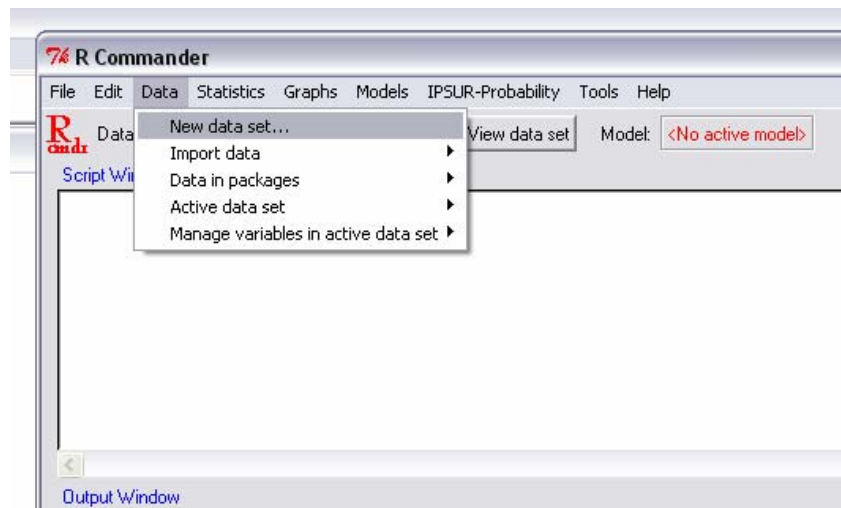


Box Plot and Side-by-Side Box Plot

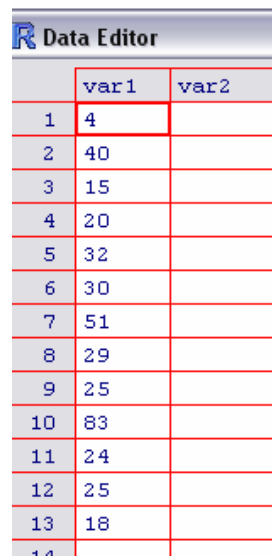
Example: The data below shows visits to a website in two separate months. Create a Box Plot for **Month 1** as well as a side-by-side box plot for **both months**.

ID	1	2	3	4	5	6	7	8	9	10	11	12	13
Month 1	4	40	15	20	32	30	51	29	25	83	24	25	18
Month 2	7	4	7	55	6	8	9	12	32	5	7	14	9

- 1.) From R Commander, click **Data** and select a **New data set...** option.

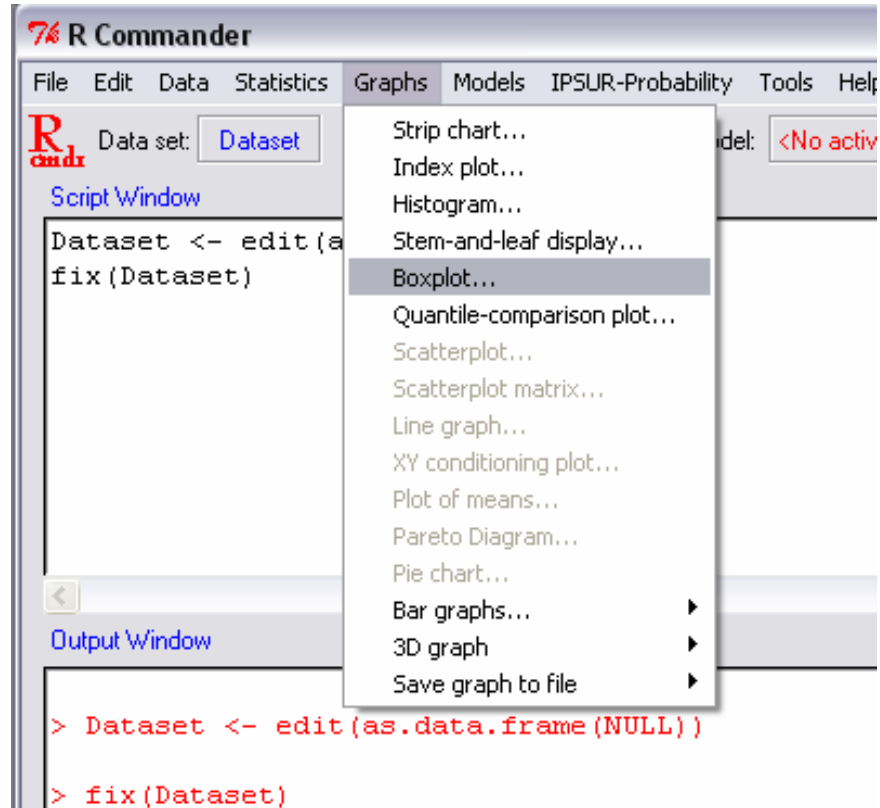


- 2.) Enter Data.

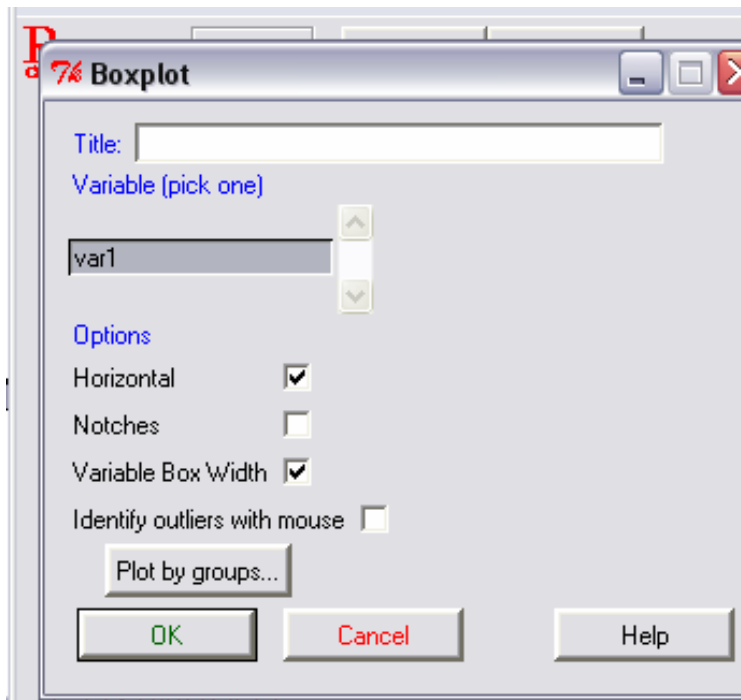
A screenshot of the R Data Editor window. It shows a data table with 14 rows and 2 columns: 'var1' and 'var2'. The data is as follows:

	var1	var2
1	4	
2	40	
3	15	
4	20	
5	32	
6	30	
7	51	
8	29	
9	25	
10	83	
11	24	
12	25	
13	18	
14		

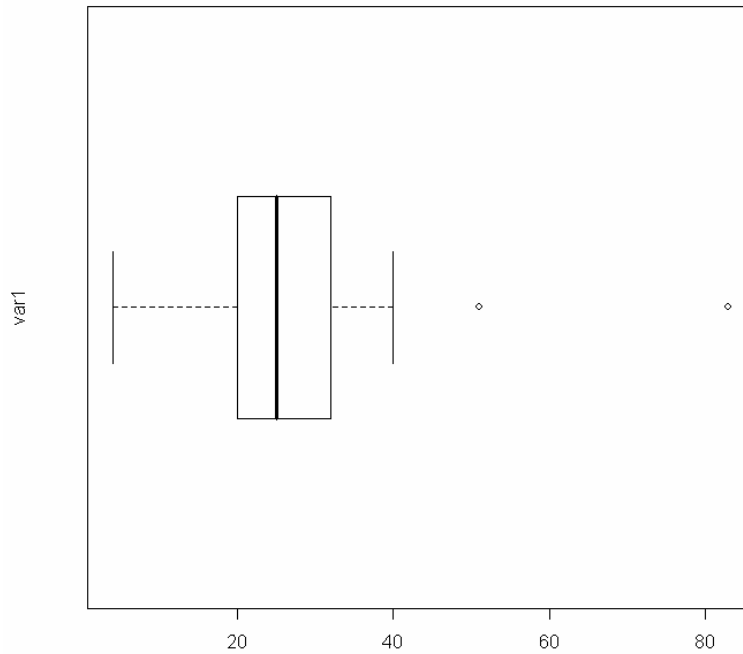
3.) Click Graph, Boxplot



3.) Accept the default Settings in the dialogue box unless one wishes to do other thing.



4.) View Plot.



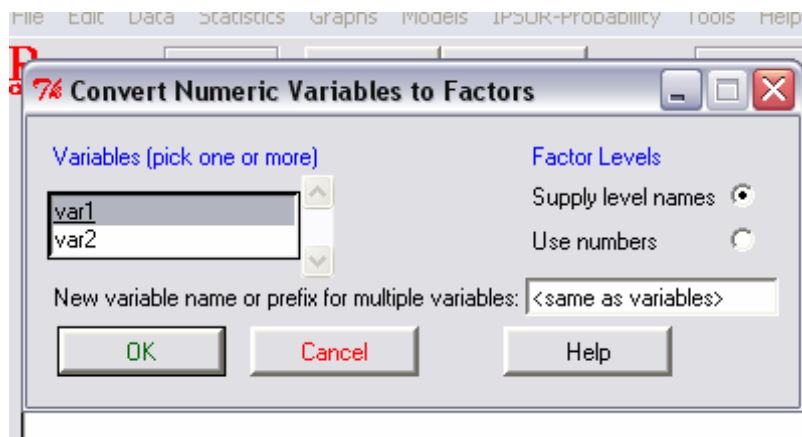
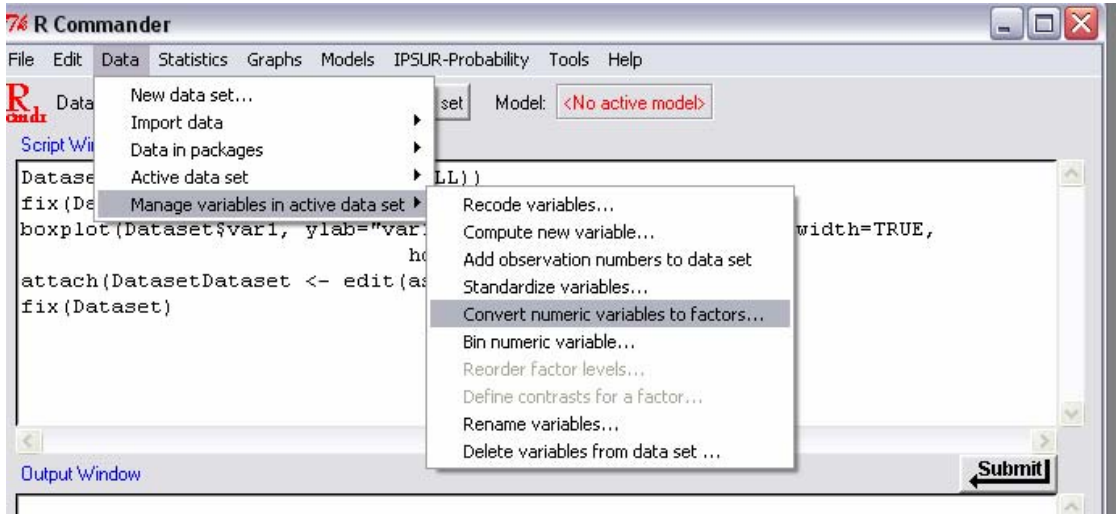
For side by side Box Plots step 1 is repeated.

2.) Enter Data in a column with 1 or 2 in the column next to it denoting month 1 and month 2

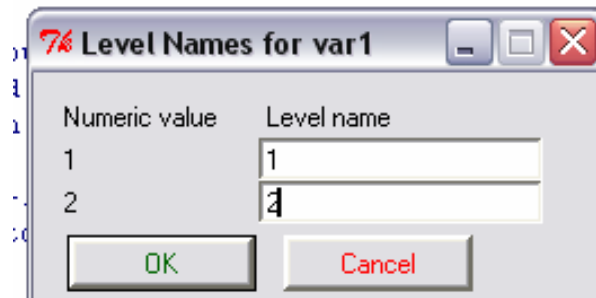
The screenshot shows the R Data Editor window with a table containing 13 rows of data. The columns are labeled var1 through var7. The data is as follows:

	var1	var2	var3	var4	var5	var6	var7
1	1	4					
2	1	40					
3	1	15					
4	1	20					
5	1	32					
6	1	30					
7	1	51					
8	1	29					
9	1	25					
10	1	83					
11	1	24					
12	1	25					
13	1	18					

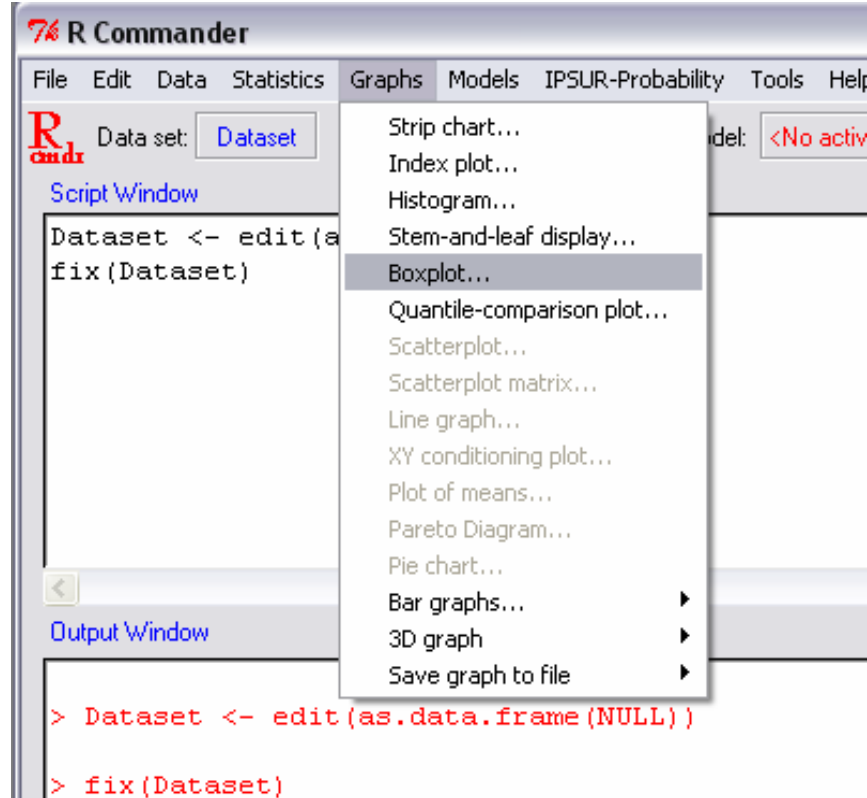
3.) Convert 1 and 2 to factors



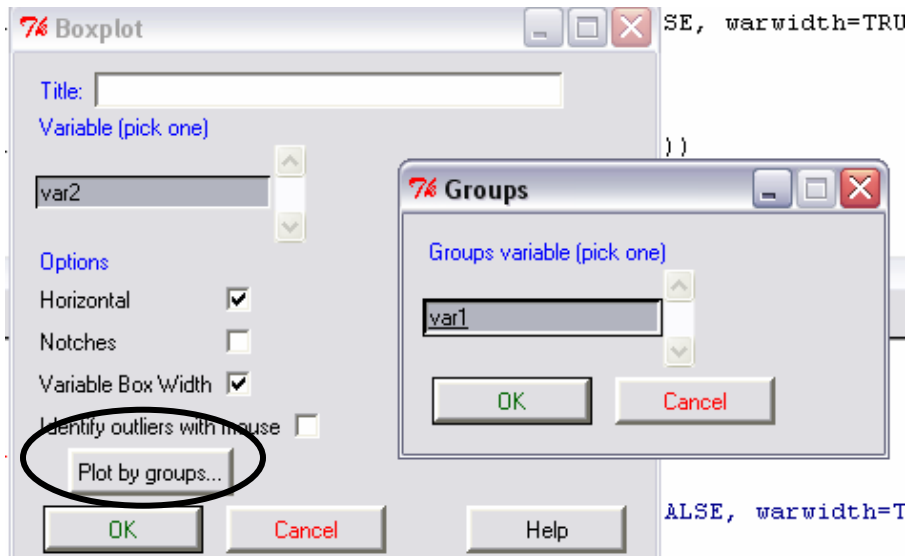
English locale



3.) Click Graph, Box Plot



4.) In Dialogue box select plot by groups and select var1 and click ok



Be sure Var 2 is also selected in the box plot window.

5.) View Plot

