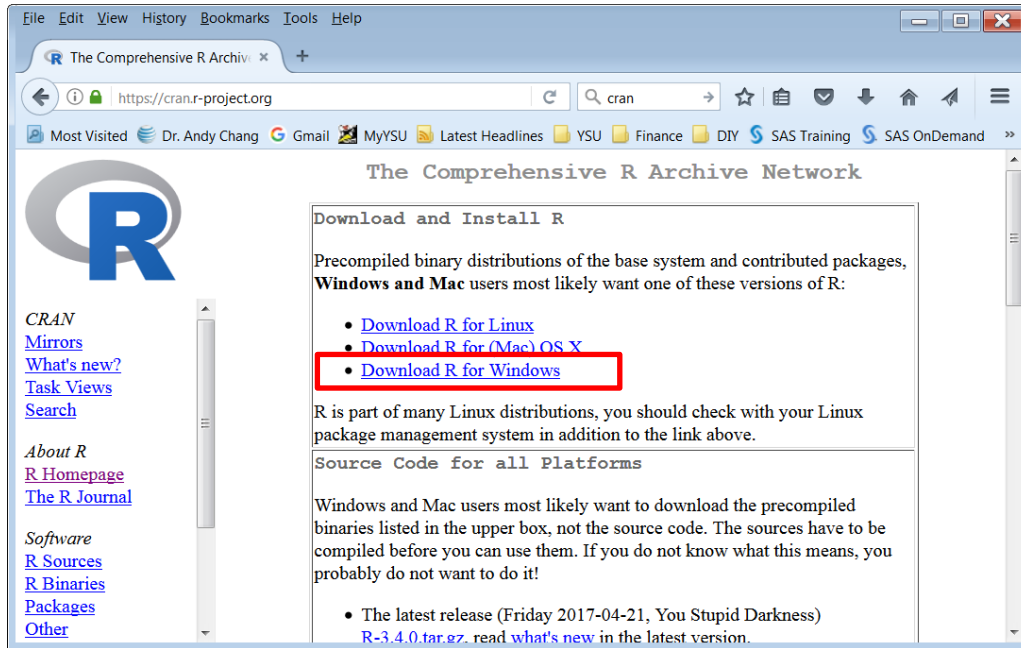


Installing R / R Commander Package for Windows System

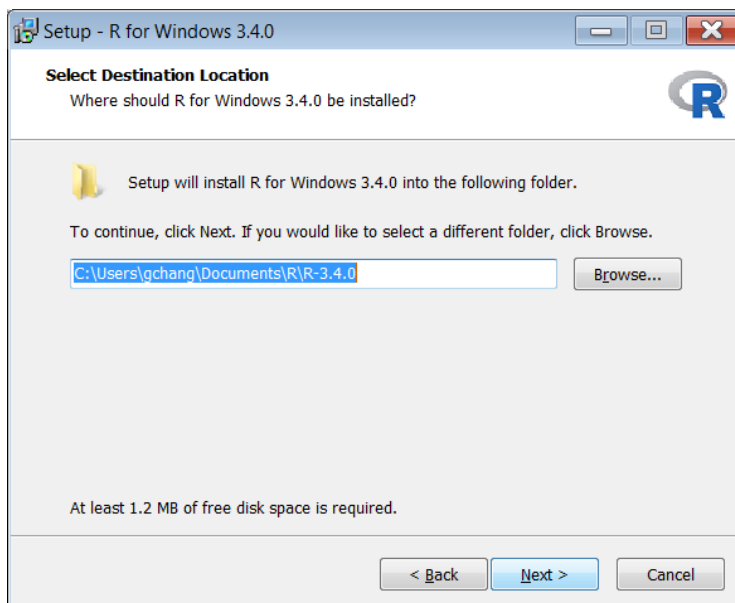
Install R Software

Visit R project web site using the following URL: <https://cran.r-project.org/>

In R web site, click on the **Download R** for the system that you use. This instruction is for Windows system, so you will click on Download R for Windows.

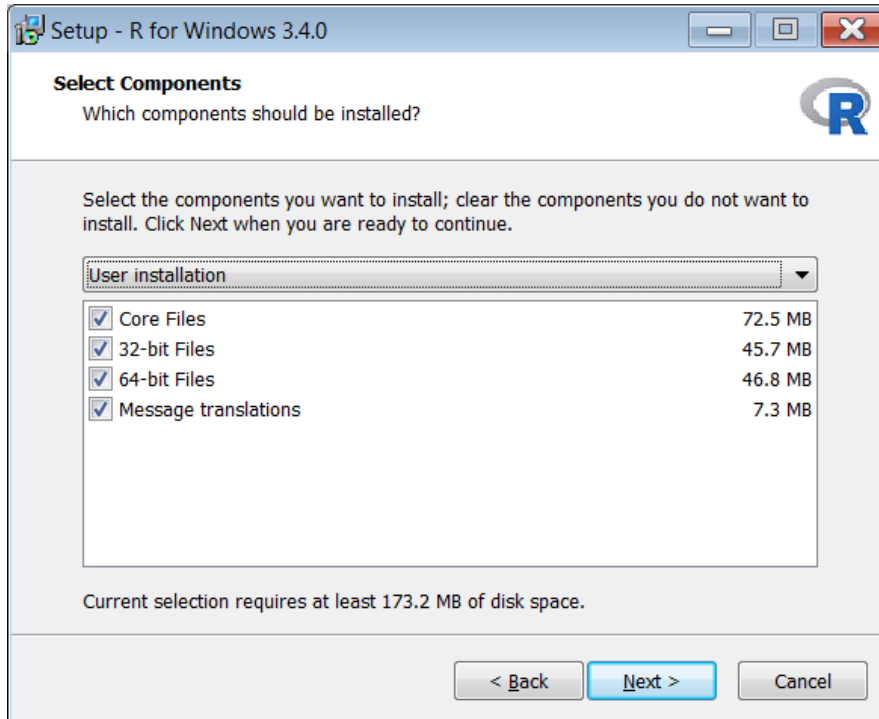


The **R-3.4.0-win.exe** file will be downloaded to your computer. Find the R-3.4.0-win.exe file or any most recent version of the installation file that you just downloaded from CRAN and run/double-click on this file to install R. You will see the following window. I use the default folder as you see in the window dialog box and click **Next** button to continue.

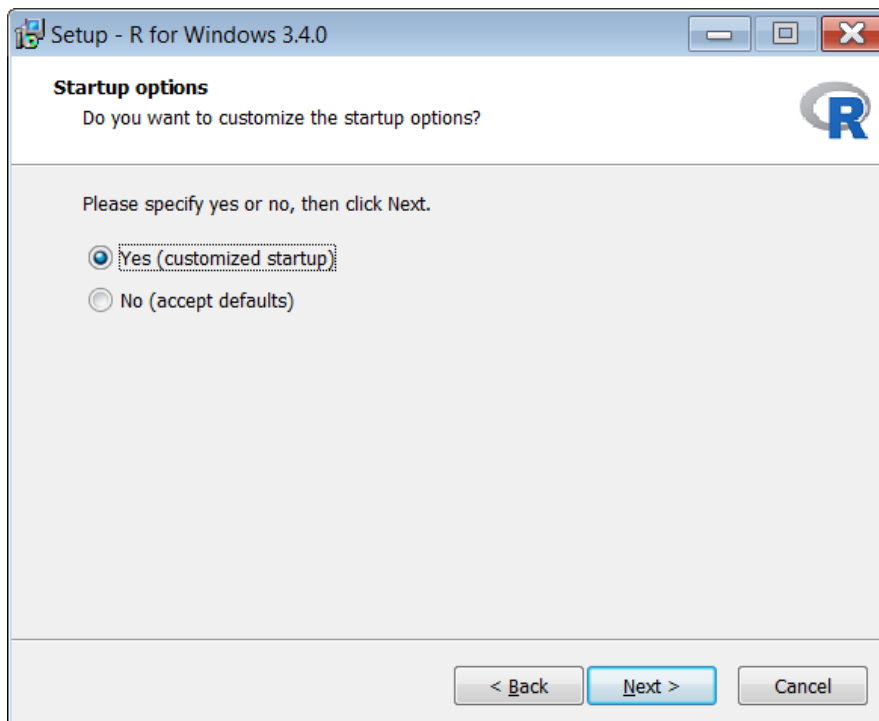


Installing R / R Commander Package for Windows System

In the following setup window, you can just click on **Next** button to continue with all boxes checked that will install all options.

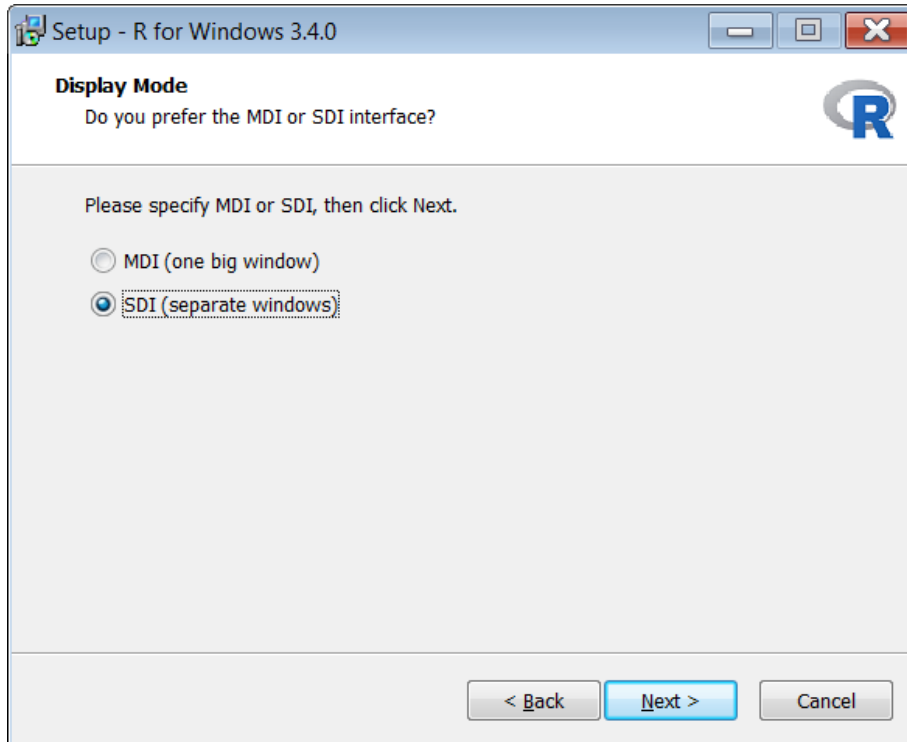


In the following window for startup option, you choose **Yes (customized startup)**, and then click **Next**.

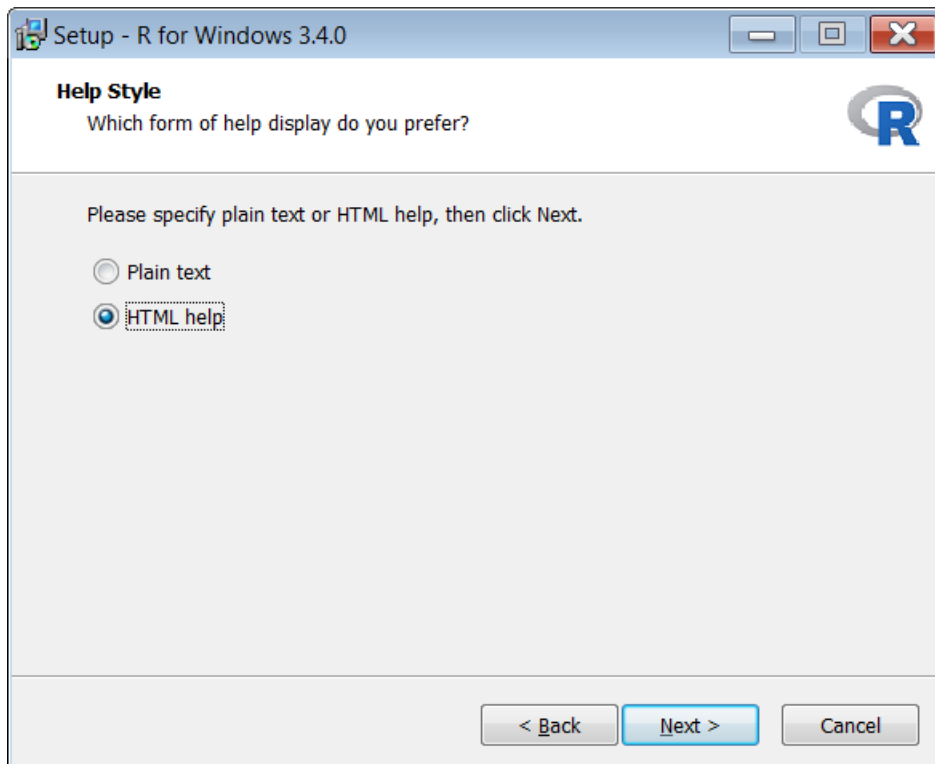


Installing R / R Commander Package for Windows System

In the window for Display Mode, choose **SDI**, and click **Next button**. This option is best for running R Commander package.

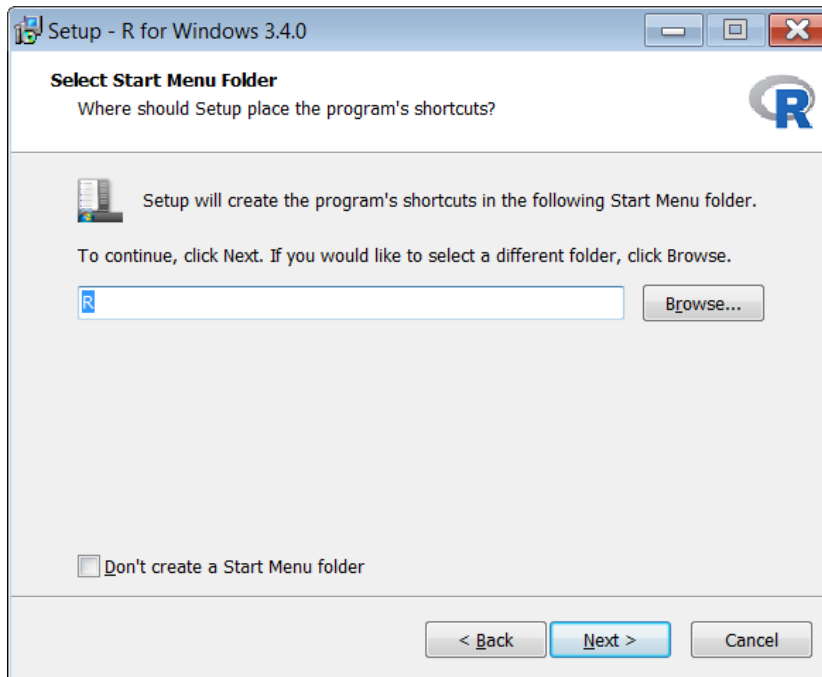


For Help Style, you can just leave it as HTML help, and click **Next** button.

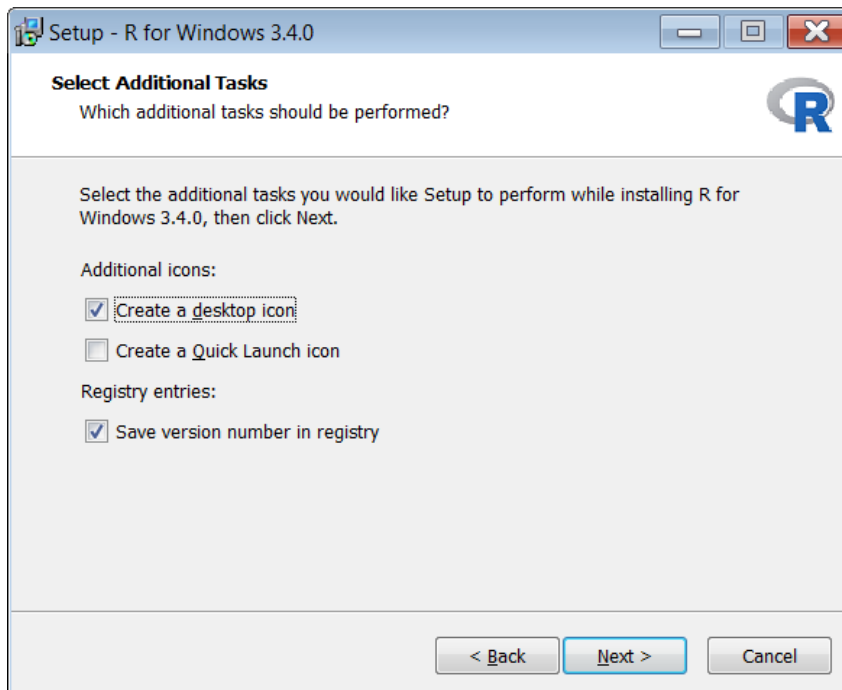


Installing R / R Commander Package for Windows System

Click **Next** button in the Select Start Menu Folder.

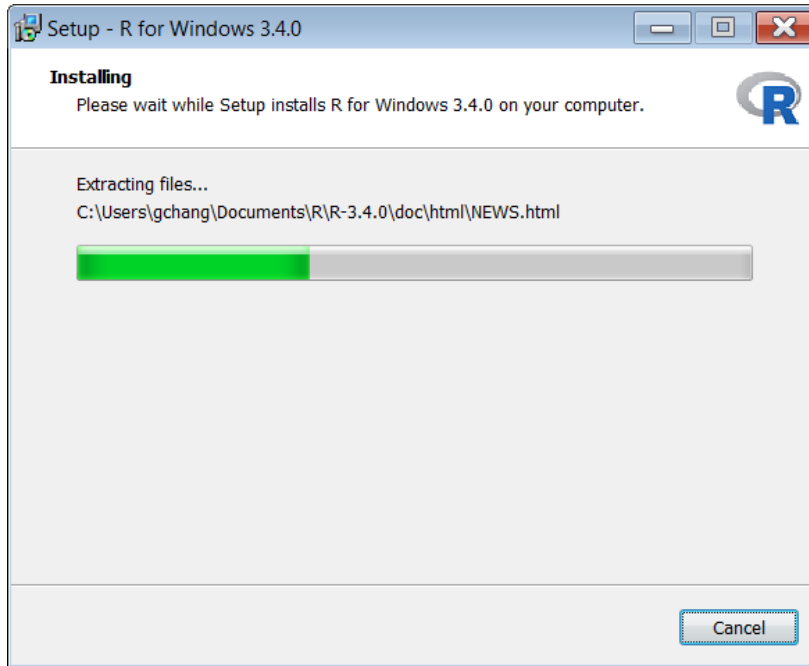


Click **Next** again in the Select Additional Tasks window.

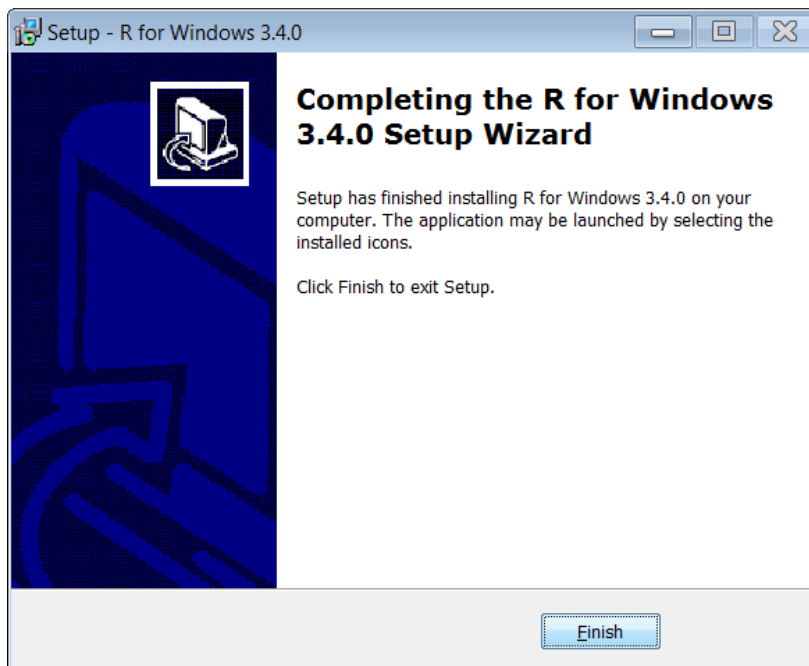


Installing R / R Commander Package for Windows System

Wait till the installation is complete.

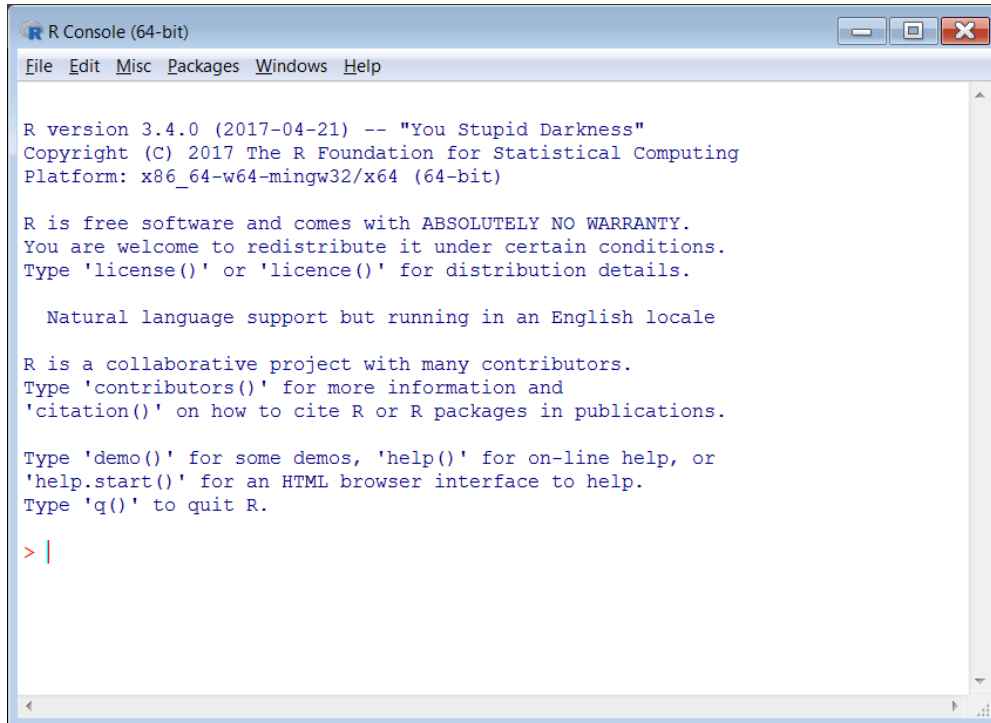


Click **Finish** button to complete the installation of R package.



Installing R / R Commander Package for Windows System

To run R software, click on the R icon on your desk top or where the file is located. You will see the following R Console window.



```
R Console (64-bit)
File Edit Misc Packages Windows Help

R version 3.4.0 (2017-04-21) -- "You Stupid Darkness"
Copyright (C) 2017 The R Foundation for Statistical Computing
Platform: x86_64-w64-mingw32/x64 (64-bit)

R is free software and comes with ABSOLUTELY NO WARRANTY.
You are welcome to redistribute it under certain conditions.
Type 'license()' or 'licence()' for distribution details.

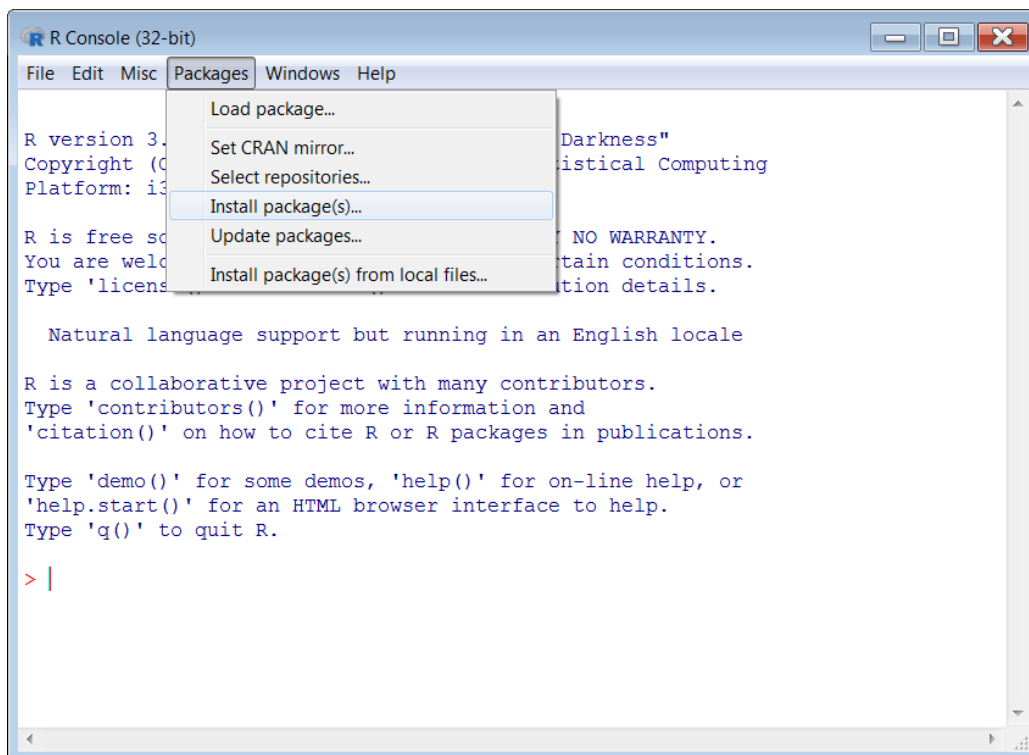
Natural language support but running in an English locale

R is a collaborative project with many contributors.
Type 'contributors()' for more information and
'citation()' on how to cite R or R packages in publications.

Type 'demo()' for some demos, 'help()' for on-line help, or
'help.start()' for an HTML browser interface to help.
Type 'q()' to quit R.

> |
```

To install R Commander package, click on **Packages** and select **Install package(s)...**



```
R Console (32-bit)
File Edit Misc Packages Windows Help

R version 3.4.0 (2017-04-21) -- "You Stupid Darkness"
Copyright (C) 2017 The R Foundation for Statistical Computing
Platform: i386-w64-mingw32/x86_64-w64-mingw32 (32-bit)

R is free software and comes with ABSOLUTELY NO WARRANTY.
You are welcome to redistribute it under certain conditions.
Type 'license()' or 'licence()' for distribution details.

Natural language support but running in an English locale

R is a collaborative project with many contributors.
Type 'contributors()' for more information and
'citation()' on how to cite R or R packages in publications.

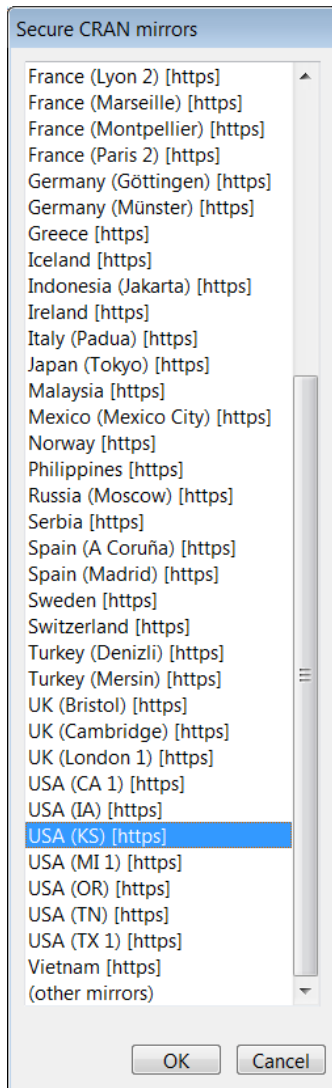
Type 'demo()' for some demos, 'help()' for on-line help, or
'help.start()' for an HTML browser interface to help.
Type 'q()' to quit R.

> |
```

- Load package...
- Set CRAN mirror...
- Select repositories...
- Install package(s)...**
- Update packages...
- Install package(s) from local files...

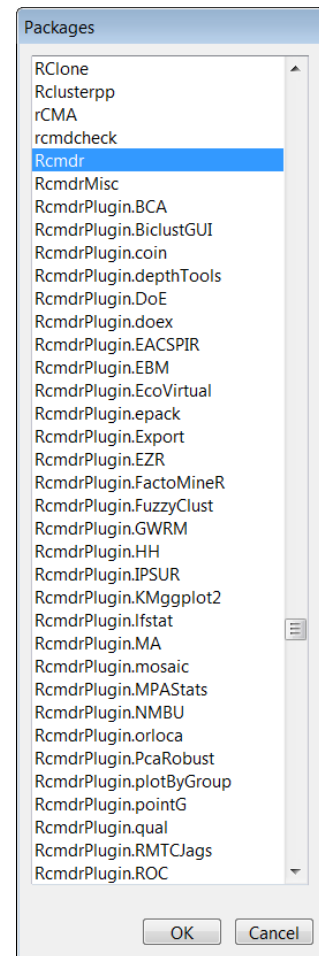
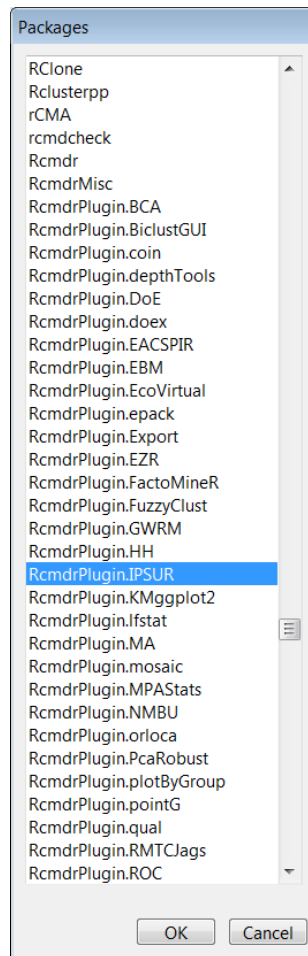
Installing R / R Commander Package for Windows System

You will be asked to choose a mirror site. I chose **USA (KS) [https]**. You can choose any other site.



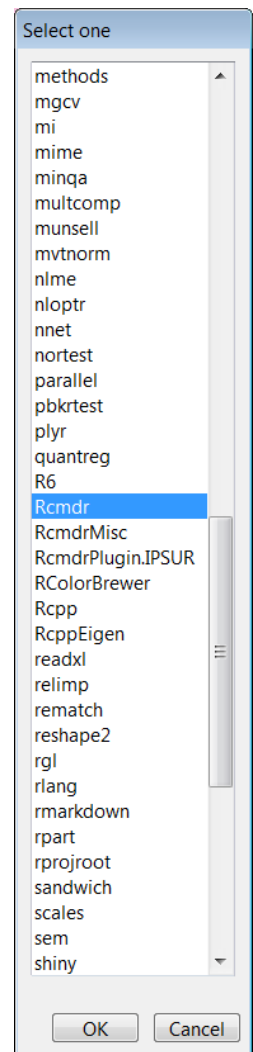
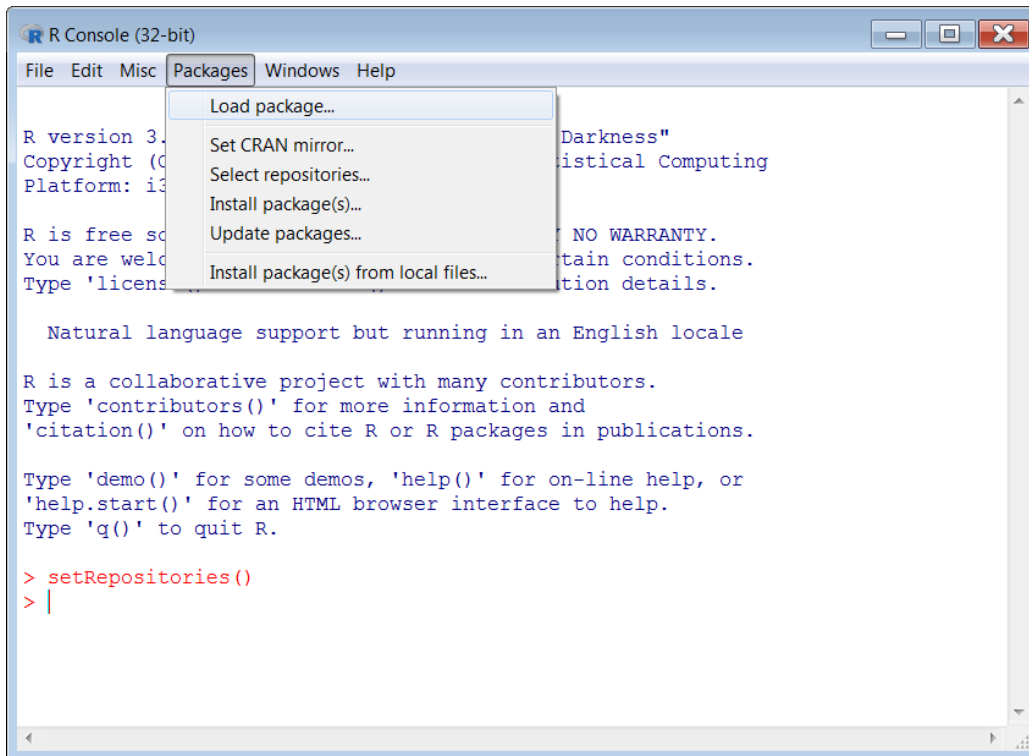
When you are asked to choose packages, you can choose **Rcmdr** for R Commander only, or choose **RcmdrPlugin.IPSUR** which is R Commander plus few other functions provided by IPSUR package. If you choose RcmdrPlugin.IPSUR, the Rcmdr will be also included.

After you clicked OK button, it will take few minutes to complete the installation.



Installing R / R Commander Package for Windows System

To run R Commander, click on **Packages** and select **Load Package...**



In the Select one window, please select **Rcmdr**, if you wish to run R Commander only. If you wish to use R Commander with IPSUR, you will need to click on RcmdrPlugin.IPSUR. The following is the R Commander window.

